

Reflection: Humankind and Creation

The relationship between urban and countryside has always been, and perhaps always be, one of tension. There is always a balance between caring for God's creation and the need for the evolution of humankind, in whatever form that takes; be it the need for houses, the need for new jobs and industry, the need to develop new ways of working and living in the world.

Some see factories and housing estates as blots on our landscapes, but how do we reconcile God in all things? See how you feel about this prayer:

Lord, you saw the wheel in your mind before we saw it roll on your good earth. You put iron in the bowels of your earth and imagined the great girders that would hold up bridges over land and sea. You heard the motor in your mind before we revved it up on our roads. You saw the computer chip before we harnessed it in our offices and the laser before we discovered how to use it for blasting mines or for performing delicate surgery.

Now bless our hands as we manipulate the machines we have made. Teach us how to use them wisely so that we will not be used by them. Bless our grinding and polishing, our honing and our hammering. Let our demands for precise and careful work be as rigorous as yours so that we may rest as safely in our cars and planes as in your arms.

Help us in all this, Lord, with joy and thanks, to see your upholding hand, great Creator of metal and mountain, master artist of the sunset and rainbow. May we not sit on foam rubber without feeling your grace or read by a light bulb without feeling a current of thankfulness for your marvellous creation running through our veins.

Hear our prayer for your Son's sake. Amen.

Pastrow Pilgrimage



Weyhill
to



Charlton

4.04 km (2.53 miles)



Pastrow Family

Churches sharing the love, grace and truth of Jesus Christ

Route details: (numbers in brackets refer to pictures)

Start: St Michael and All Angels, Weyhill, GR SU 3176 4665

Grid Ref	Directions
SU 3176 4662	Turn L along Weyhill Rd (foot/cycle path), 1250m past Weyhill Fair and Bell PHs to Short Lane (1)
SU 3296 4626	Turn L into Short Lane, 350m to LH-bend
SU 3309 4654	Straight ahead into unmade Harrow Way (2). Keep straight, 1200m through Portway Ind Estate to ring road
SU 3424 4642	Cross ring road (3), keep straight 300m through Sterling Park and Caxton Close to road/FP jct (4)
SU 3453 4644	Turn L on FP, 550m past Basepoint Business Centre & golf course then, leaving play park and lake on your right, over footbridge (5) to Foxcotte Road (6)
SU 3470 4700	Turn R along Foxcotte Rd, 400m to T-jct and churchyard gate

End: St Thomas, Charlton, GR SU 3508 4704

Refreshments: Weyhill Fair PH (SU 319466)
 Bell PH (SU 325464)
 Charlton Lakeside
 Royal Oak PH, Charlton (150m S of church)
 Charlton Convenience Store (100m S of church)
 Tesco Express, Charlton (300m S of church)



(6)



(5)

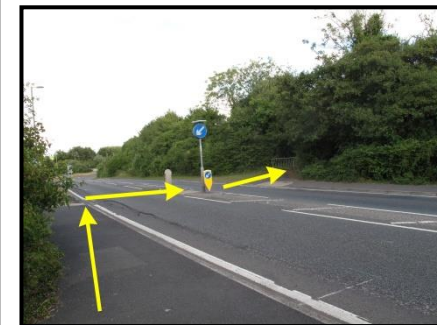
Photographs:



(1)



(2)



(3)



(4)